

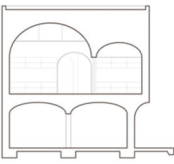
FROZEN

THEME

FROZEN BY DISNEY STUDIOS

Frozen is a 2013 American 3D computer-animated musical fantasy-comedy film produced by Walt Disney Animation Studios and released by Walt Disney Pictures. It is the 53rd animated feature in the Walt Disney Animated Classics series. Inspired by Hans Christian Andersen's fairy tale The Snow Queen, and featuring the voices of Kristen Bell, Idina Menzel, Jonathan Groff, Josh Gad, and Santino Fontana, the film tells the story of a fearless princess who sets off on an epic journey alongside a rugged, thrill-seeking mountain man, his loyal reindeer and a hapless snowman to find her estranged sister, whose icy powers have inadvertently trapped the kingdom in eternal winter.

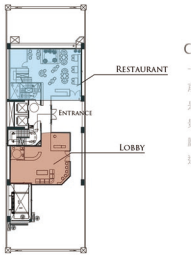
From Frozen as the original movie's hair like theme building, sound and visual effects of light, ice palace, ice magic on Each are eye-catching. Take advantage of this element in the construction industry, coupled with the use of the Greek village style into the theme,



SPACE UTILIZATION

BUILDING STRUCTURE

Vaulted forms orient one another throughout these spaces, link spaces and frame a number of artworks belonging to the owner.



SITE ANALYSIS

竹北市 ZHUBEI CITY BY 新竹縣

竹北市位於台灣西北部，北屏湖口台地，南倚竹東丘陵，屬新竹平原北半部，是新竹縣西側沿海的行政區，也是縣治所在地。北有鳳山溪，南有頭前溪，居兩河下游之沖積扇土壤肥沃適宜農業栽培，是新竹縣的米倉。後來新竹市升格改制，縣市因而分治，縣政府北遷竹北頂斗崙；原屬農業鄉鎮的「竹北鄉」，因而改制為政治中心的「竹北市」。做為新竹市的衛星城市，且地近新竹科學園區，加上各項交通建設陸續完成（國道一號竹北交流道、台灣高鐵新竹車站、台鐵六家車站），以及大專院校與研究機構的進駐計畫，近年來房地產交易熱絡，人口成長極為迅速。

DESIGN CONCEPT

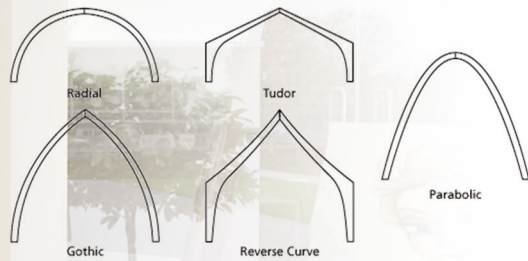
VAULTED & WHITE

The assembly of stacked and unidirectional vaulted rooms contained within a simple rectilinear volume

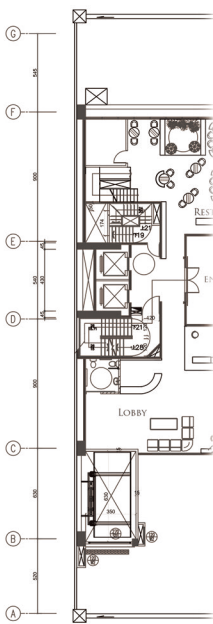
The same motif is repeated throughout the interior, creating a series of vaulted doorways rooms and corridors that conclude with a large framed view of the beach and ocean.

White as the theme colors

Mainly white and clean to express the atmosphere of the entire building and interior



LAYOUTS:



ONE FLOOR

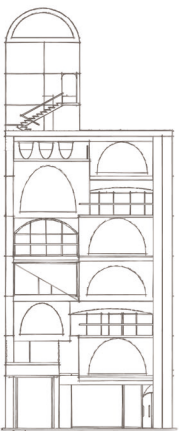
BUILDING MATERIALS

REINFORCED CONCRETE (RC)

鋼筋混凝土（英語：Reinforced Concrete, Ferroconcrete, RC）· 工程上常簡稱為鋼筋砼或鋼混，是指通過在混凝土中加入鋼筋、鋼筋網、鋼板或纖維而構成的一種組合材料，兩者共同工作從而改善混凝土抗拉強度不足的力學性質，為混凝土加固的一種常見形式。

LATEX PAINT

類似水泥漆，質感比水泥漆高，觸感良好。為了表現乳膠漆良好觸感的特性，必須搭配非常平整的牆面，塗刷之前的補土，批土及砂紙磨平非常耗工，必須依賴有專業經驗的師傅才能展現乳膠漆良好觸感的特性，不適合使用者自行DIY，也不適合預算較低的使用者



FRONT VIEW

